

Halogen (< 75 V) with Reflector



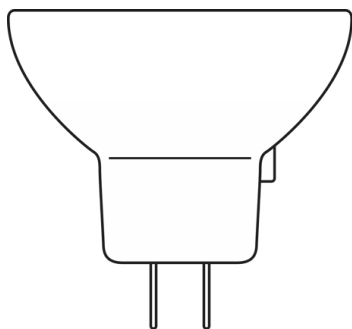
Areas of application

- Microscopy
- Laboratory & Analysis
- UV Curing
- Fiber Illumination
- Surgical & Dental Overhead

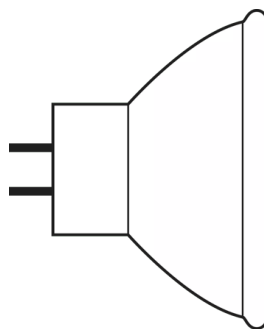
Product features and benefits

- Precise filament and reflector alignment with patented quartz pinch technology
- HLX lamps provide 10% higher luminous flux with same power consumption over standard halogen
- Instant on and nearly constant luminous flux over the life of the lamp
- Dimmable

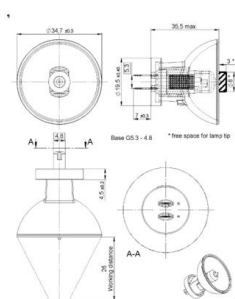




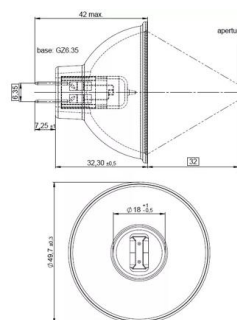
HALOGEN LAMP WITH REFLECTOR 64255



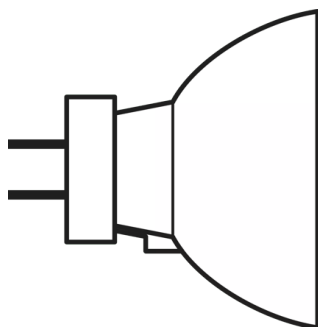
Halogen Lamp with reflector MR16



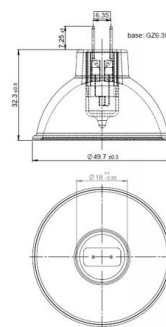
64617S 75W 12V



64615 HLX 75W 12V

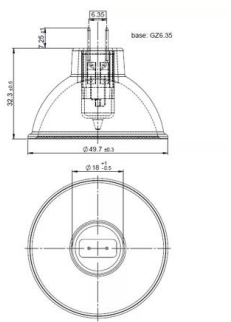


Halogen Lamp with reflector MR11

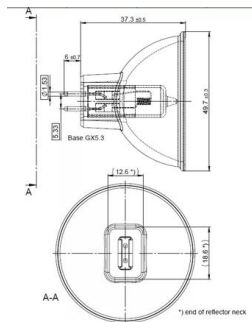


64634 HLX 150W 15V

Product family datasheet



64627 HLX 100W 12V



64653 HLX 250W 24V

Product family datasheet

Technical data

| | General Product Information | | Electrical Data | Physical Attributes & Dimensions |
|---------------------------------|-----------------------------|----------|-----------------|----------------------------------|
| Product description | ANSI code | LIF code | Nominal voltage | Lamp base |
| 64255 20 W 8 V | - | - | 8 V | G4 |
| 93520 300 W 82 V ¹⁾ | FHS | - | 82 V | GX5.3 |
| 64607 50 W 8 V | EFM | A1/229 | 8 V | GZ6.35 |
| 64619 90 W 14.5 V | EPX | - | 14.5 V | GX5.3 |
| 93506 250 W 120 V | ENH | - | 120 V | GY5.3 |
| 64617 S 75 W 12 V ²⁾ | - | - | 12 V | G5.3-4.8 |
| 64615 HLX | EFN | A1/230 | 12 V | GZ6.35 |
| 64617 75 W 12 V | - | M/117 | 12 V | G5.3-4.8 |
| 64634 HLX | EFR | A1/232 | 15 V | GZ6.35 |
| 64627 HLX | EFP | A1/231 | 12 V | GZ6.35 |
| 64624 100 W 12 V | - | A1/51 | 12 V | G5.3-4.8 |
| 64659 250 W 24 V | ELC | A1/259 | 24 V | GX5.3 |
| 93518 300 W 120 V | ELH | - | 120 V | GY5.3 |
| 64629 100 W 12 V | EFP | A1/231 | 12 V | GZ6.35 |
| 64637 100 W 12 V | EBV | A1/271 | 12 V | GZ6.35 |
| 64635 HLX ³⁾ | - | - | 15 V | GZ6.35 |
| 64620 150 W 15 V | EFR | A1/232 | 15 V | GZ6.35 |
| 64653 HLX | ELC | A1/259 | 24 V | GX5.3 |
| 93637 150 W 21 V | EJV | - | 21 V | GX5.3 |
| 93638 150 W 21 V | EKE | - | 21 V | GX5.3 |
| 93653 250 W 24 V | ELC | A1/259 | 24 V | GX5.3 |

| | Lifetime Data |
|---------------------------------|------------------|
| Product description | Nominal lifetime |
| 64255 20 W 8 V | 50 hr |
| 93520 300 W 82 V ¹⁾ | 70 hr |
| 64607 50 W 8 V | 50 hr |
| 64619 90 W 14.5 V | 500 hr |
| 93506 250 W 120 V | 175 hr |
| 64617 S 75 W 12 V ²⁾ | 25 hr |
| 64615 HLX | 50 hr |
| 64617 75 W 12 V | 25 hr |
| 64634 HLX | 50 hr |
| 64627 HLX | 50 hr |
| 64624 100 W 12 V | 25 hr |
| 64659 250 W 24 V | 1000 hr |
| 93518 300 W 120 V | 35 hr |
| 64629 100 W 12 V | 600 hr |
| 64637 100 W 12 V | 1500 hr |
| 64635 HLX ³⁾ | 50 hr |
| 64620 150 W 15 V | 500 hr |

Product family datasheet

| Product description | Lifetime Data |
|---------------------|------------------|
| | Nominal lifetime |
| 64653 HLX | 50 hr |
| 93637 150 W 21 V | 100 hr |
| 93638 150 W 21 V | 200 hr |
| 93653 250 W 24 V | 300 hr |

1) Available on request
2) Spot adjustment
3) Infra-red lamp; temperature at the focal point approximately 1300 °C

Product family datasheet

Safety advice

To prevent personal injury or damage to property, halogen lamps may only be operated in suitable luminaires designed with suitable mechanisms (protective shields, grids, etc.) to ensure that in the event of a lamp bursting no parts/shards can escape and that during operation no ultraviolet radiation can escape. There must also be a warning sign to indicate that the lamps give off high levels of heat. Detailed information is available on request.

Application advice

For more detailed application information and graphics please see product datasheet.

Disclaimer

Subject to change without notice. Errors and omission excepted. Always make sure to use the most recent release.